

MODIFICATION SHEET NO. RDSO/WAM-4/187

**PROVISION OF CANOPY ON SAFETY VALVES OF
TAP CHANGER TYPE NO. 32 OF M/S ABB**

1. OBJECT

Railways have reported maintenance problems on tap changers provided with ducting arrangement. In order to overcome the same it has been decided to provide canopy (cover) on safety valves of GR with Tray and drain pipe (for draining out the discharged oil) in place of the ducting. M/s ABB have already introduced this canopy arrangement on their build tap changers from S.No. IB40 492 392.

2. WORK TO BE CARRIED OUT

- 2.1** Procure two Nos.. of canopy as per RDSO Drg. No. SK EL 4339.
- 2.2** Remove the two holding bolts from one side of the base of the GR bushing.
- 2.3** Place the canopy on the safety valve to match its clamps holes with the holes of GR bushing from where the bolts have been removed.
- 2.4** Refix the removed bolts over the canopy clamps and tighten them.
- 2.5** Repeat 2.2 to 2.4 for fixing the canopy on the other side of the bushing.
- 2.6** Provide metallic pipe of dia 50 mm and length 500 mm in the centre of the existing tray (as per RDSO modification No. WAM-4/24) on its back side below tap changer.
- 2.7** Where tray below GR has not been provided due to space limitations, provide metallic pipe of the above size below GR for drainage of discharged oil.

3. APPLICATION TO CLASS OF LOCOMOTIVES

All ac and ac/dc locos fitted with No. 32 tap changers of ABB make.

4. MATERIAL REQUIRED

- 4.1** Canopy as per Drg. RDSO SK EL 4339
4.2 Metallic pipe 50 mm dia. 500 mm length.

5. REFERENCE

- (i) ABB sketch No. TC - 201A.
(ii) RDSO letter No. 3.2.30 dated 7.11.89.
(iii) Para 2 of the page 2 of the minutes of the Coordination Meeting held on 8.1.92.
(iv) Para 2.1.2 of page 7 of Minutes of the Coordination Meeting held on 5/6th Aug. 93.

6. MODIFICATION DRAWING

SK EL - 4339

7. AGENCY OF IMPLEMENTATION

All ac electric loco sheds and POH shops.

Reel

Encl :

Copy to :-

(R.N. Lal)

for Director General (Elect.)

The Chief Electrical Engineers :

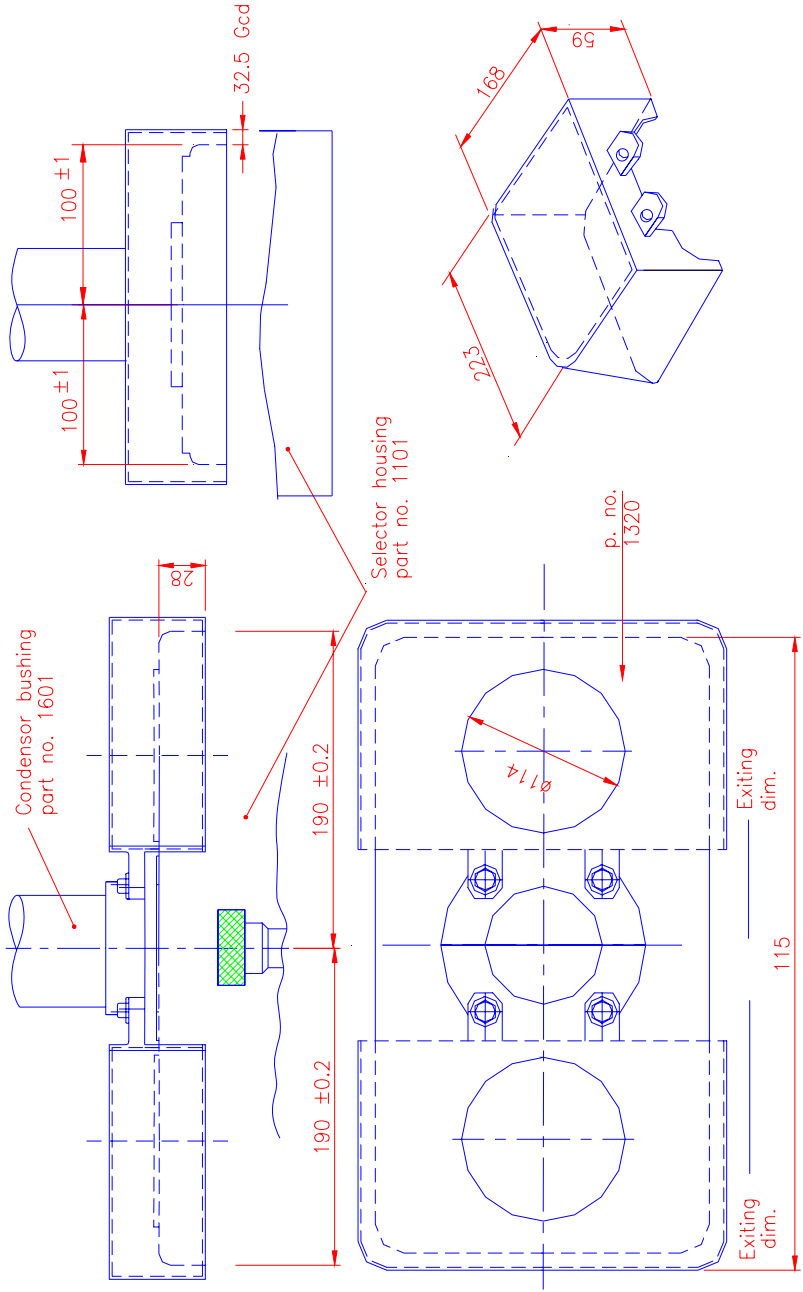
1. Central Railway, Bombay VT - 400 001
2. Western Railway, Churchgate, Bombay - 400 020
3. Southern Railway, Park Town, Madras - 600 003
4. Northern Railway, Baroda House, New Delhi - 110 001
5. Eastern Railway, Fairlie Place, Calcutta - 700 001
6. South Eastern Railway, Garden Reach, Calcutta - 43
7. South Central Railway, Secunderabad (A.P.)
8. Chittaranjan Locomotive Works, Chittaranjan, Dist. Burdwan (West Bengal)
9. Secretary (Electric Traction), Railway Board, New Delhi.

Reel

(R. N. Lal)

for Director General (Elect.)

Encl : One



REF:-- BBC HINDUSTAN BROWN BOVERI SKETCH TC 201A	SCALE:-- NTS	APPROVED:--
CANOPY FOR SAFETY VALVES OF GR		
RDSO.ELEC.DTE.	SK EL-4339	

30.3.98
SCHINDRA
H.N.S.
DHILLON

